

1- Auburn Leaf Dr
Collierville, TN 38017

2- 9358 Williams Glen Cv
Germantown, TN 38139

3- 8030 Winchester Rd
Memphis, TN 38125

4- 8562 Austin Peay Hwy
Millington, TN 38053

5- 855 Union Ave
Memphis, TN 38103

6- 2567 Oxford Ave
Memphis, TN 38112

7- 1531 Peabody Ave
Memphis, TN 38104

8- 5676 Stage Rd
Memphis, TN 38134

9- 57 N Somerville St
Memphis, TN 38104

10- 3611 Mill Branch Park Dr
Memphis, TN 38116

11- 148 St Paul Ave
Memphis, TN 38103

12- 1139 S Shady Grove Rd
Memphis, TN 38119

13- 113 N Main St
Memphis, TN 38103

14- 1664 Castex St
Memphis, TN 38109

15- 896 Getwell Rd
U of M, Memphis, TN 38111

16- 3849 New Getwell Rd
Memphis, TN 38118

17- 6818 Sprucehill Dr
Memphis, TN 38135

18- 4685 Shadow Fork Cove
Arlington, TN 38002

1- Auburn Leaf Dr
Collierville, TN 38017

2- 9358 Williams Glen Cv
Germantown, TN 38139

3- 8030 Winchester Rd
Memphis, TN 38125

4- 8562 Austin Peay Hwy
Millington, TN 38053

5- 855 Union Ave
Memphis, TN 38103

6- 2567 Oxford Ave
Memphis, TN 38112

7- 1531 Peabody Ave
Memphis, TN 38104

8- 5676 Stage Rd
Memphis, TN 38134

9- 57 N Somerville St
Memphis, TN 38104

10- 3611 Mill Branch Park Dr
Memphis, TN 38116

11- 148 St Paul Ave
Memphis, TN 38103

12- 1139 S Shady Grove Rd
Memphis, TN 38119

13- 113 N Main St
Memphis, TN 38103

14- 1664 Castex St
Memphis, TN 38109

15- 896 Getwell Rd
U of M, Memphis, TN 38111

16- 3849 New Getwell Rd
Memphis, TN 38118

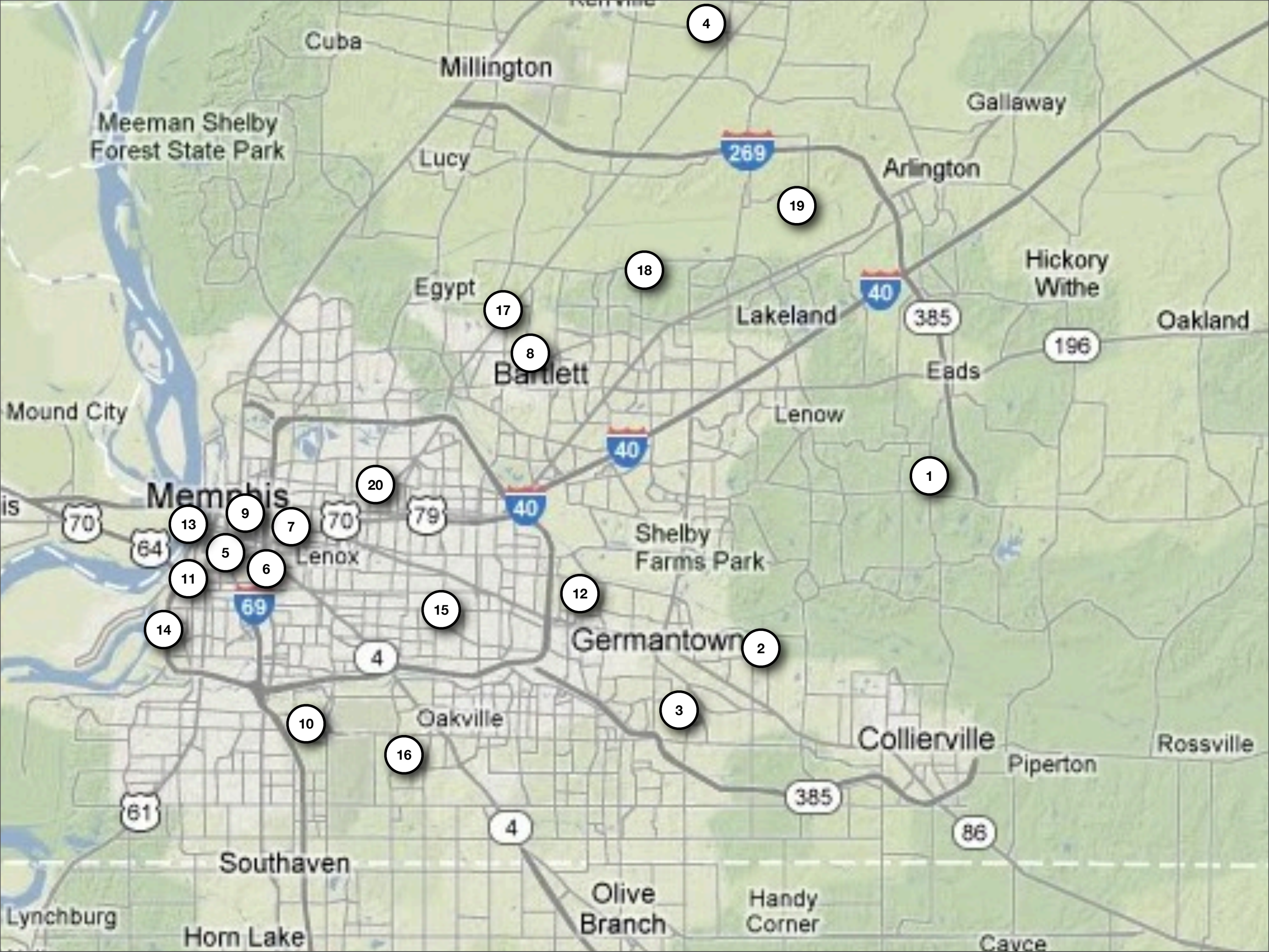
17- 6818 Sprucehill Dr
Memphis, TN 38135

18- 4685 Shadow Fork Cove
Arlington, TN 38002

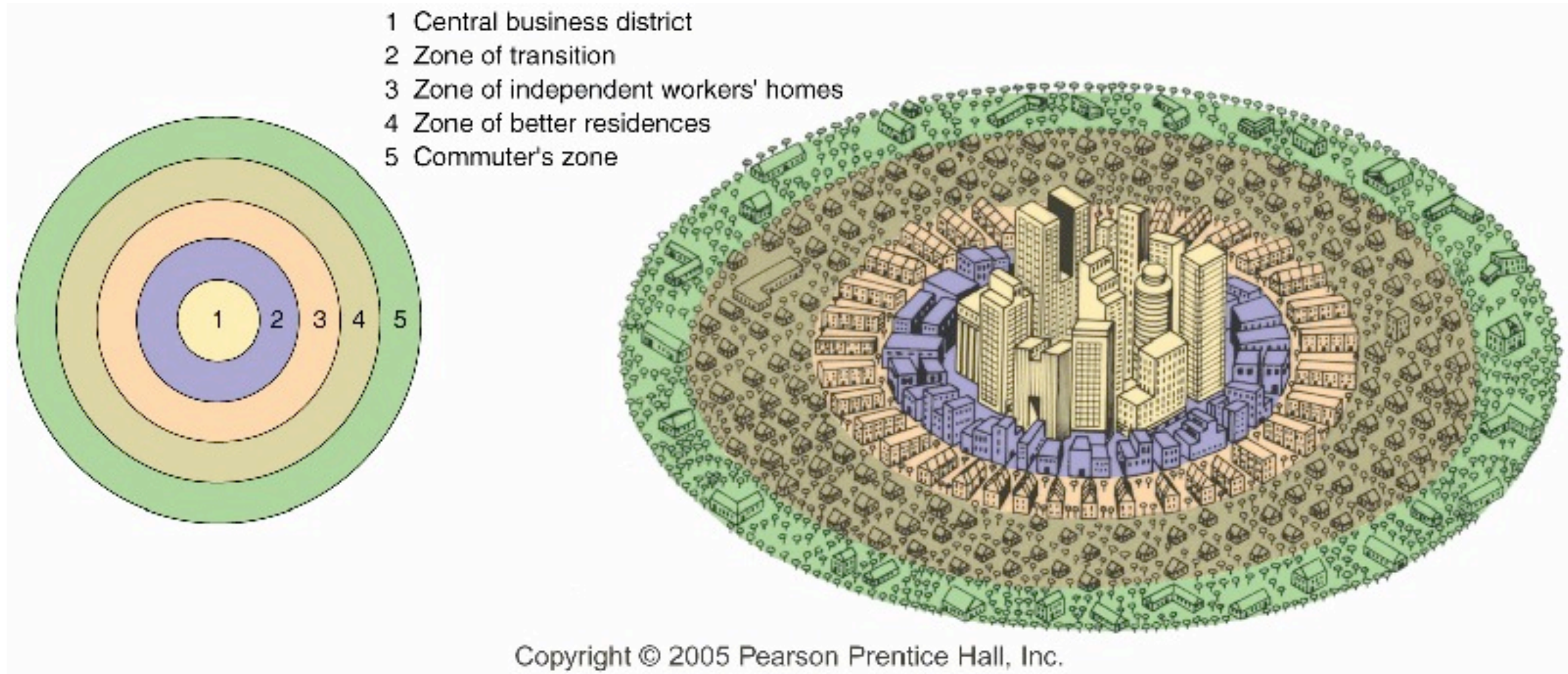
19- 5221 Adagio Ln
Lakeland, TN 38002

20- 814 Scott St
Memphis, TN 38112

Map Location	Urban Model Applied	Description of Location	Explanation of how is applies to the model
1			
2			
3			
4			
5			
6			
7			
8			
9			
10			
11			
12			
13			
14			
15			
16			
17			
18			
19			
20			

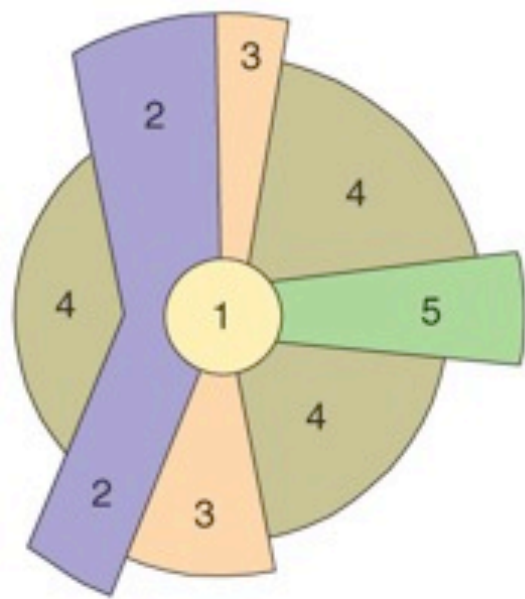


Concentric Zone Model

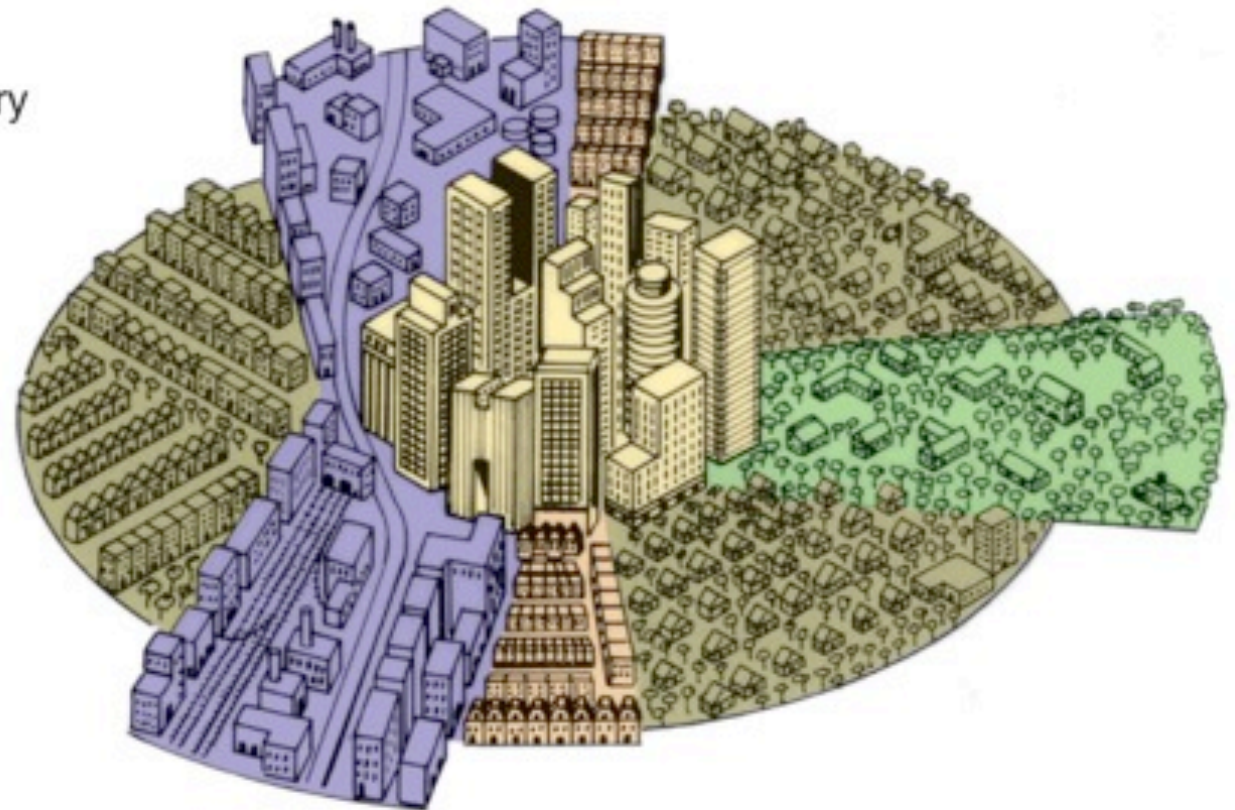


Developed in 1925 by Ernest W. Burgess

Sector Model



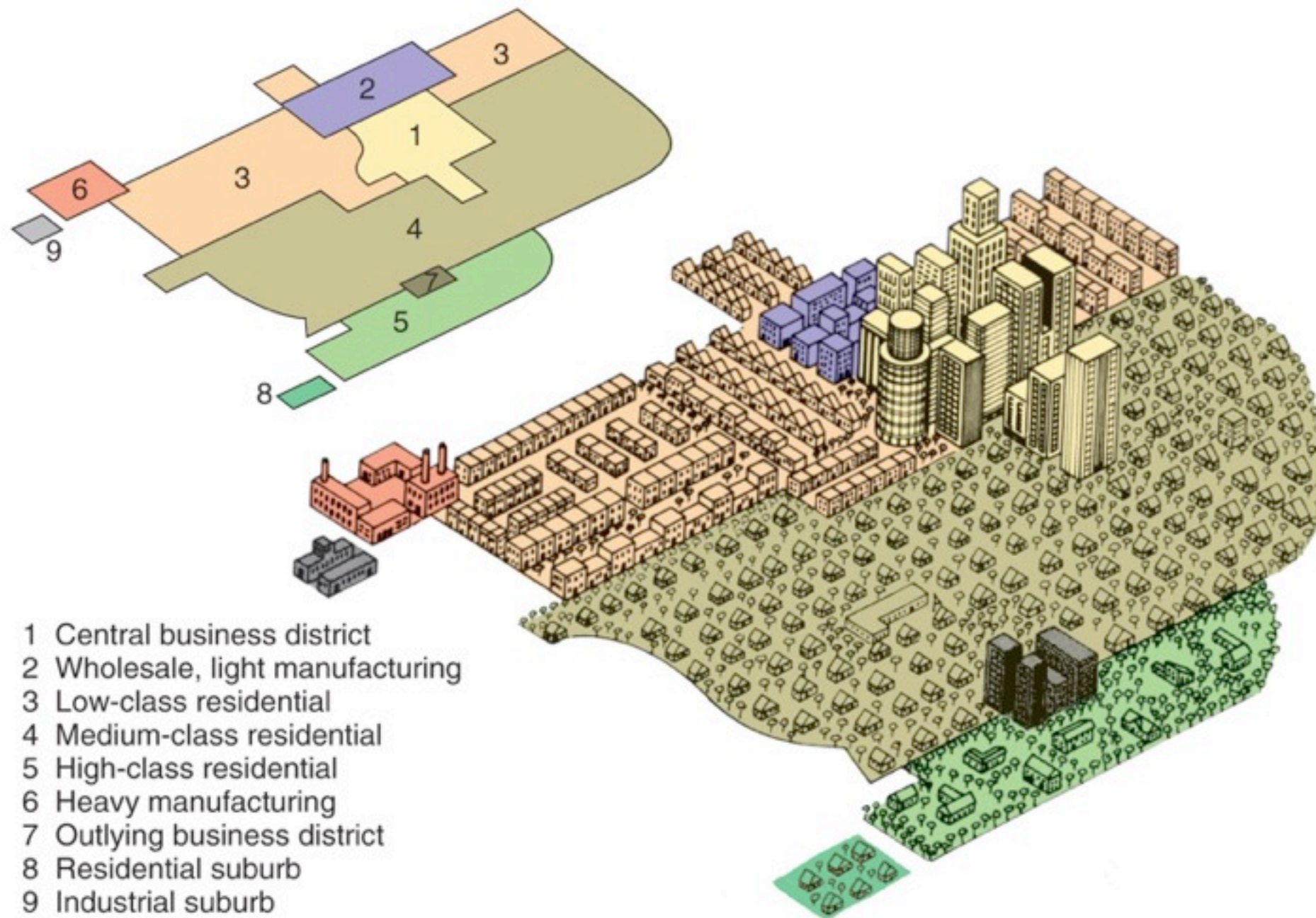
1. Central business district
2. Transportation and industry
3. Low-class residential
4. Middle-class residential
5. High-class residential



Copyright © 2008 Pearson Prentice Hall, Inc.

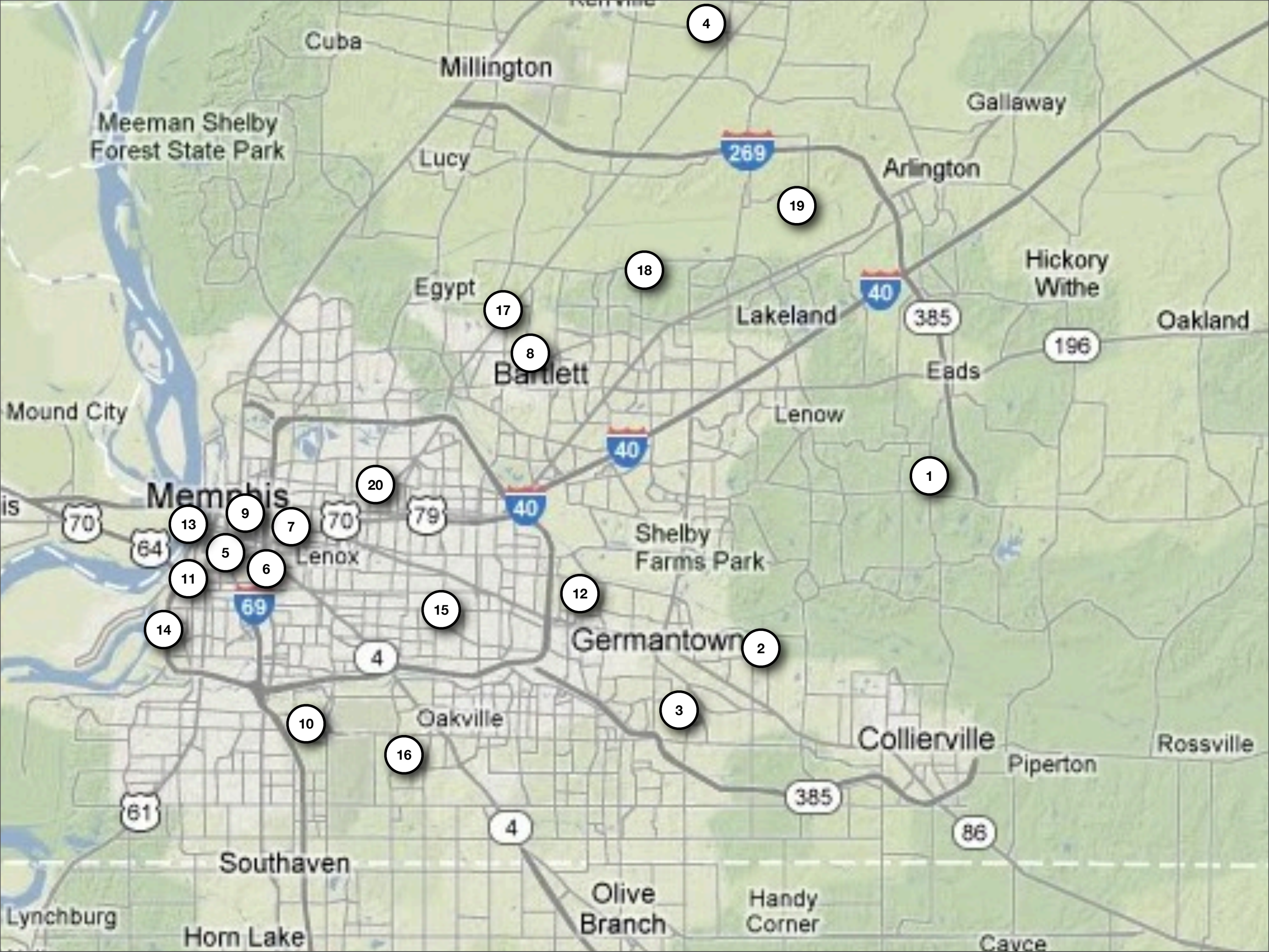
Homer Hoyt, an economist, presented his sector model in 1939

Multiple Nuclei Model



Copyright © 2008 Pearson Prentice Hall, Inc.

Suggested by Chauncey Harris and Edward Ullman in 1945



1

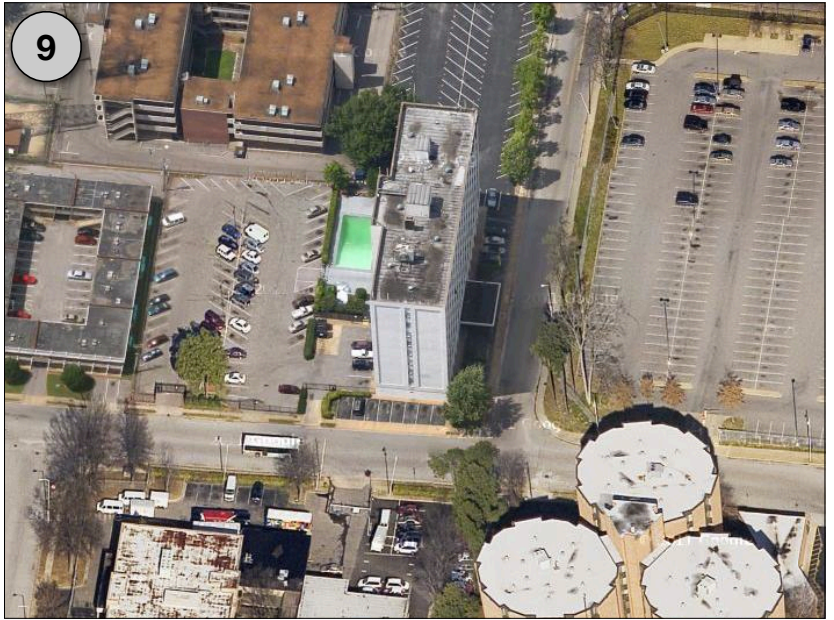
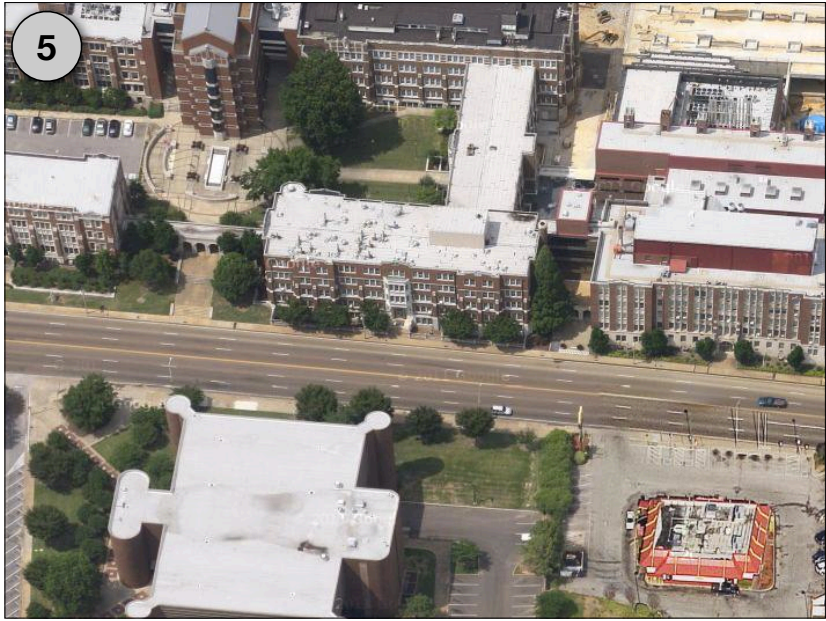
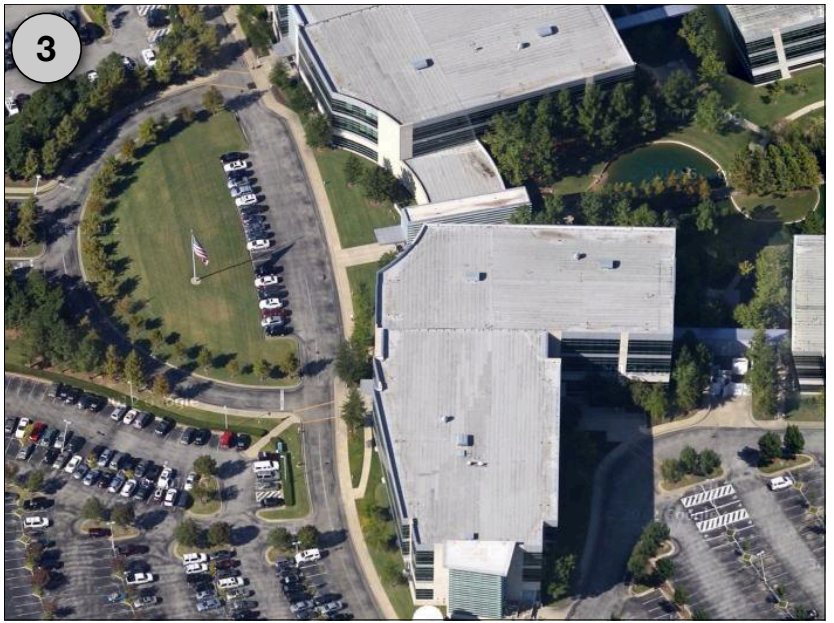
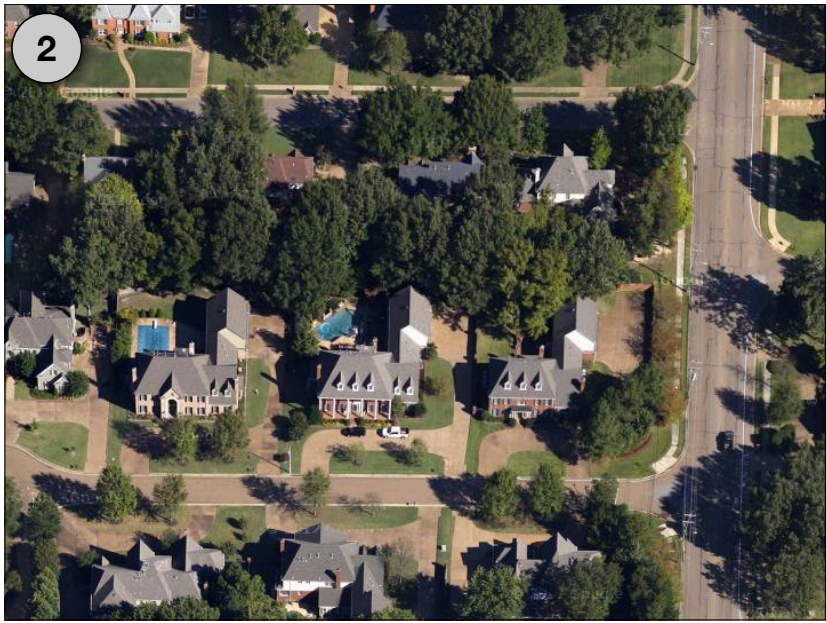
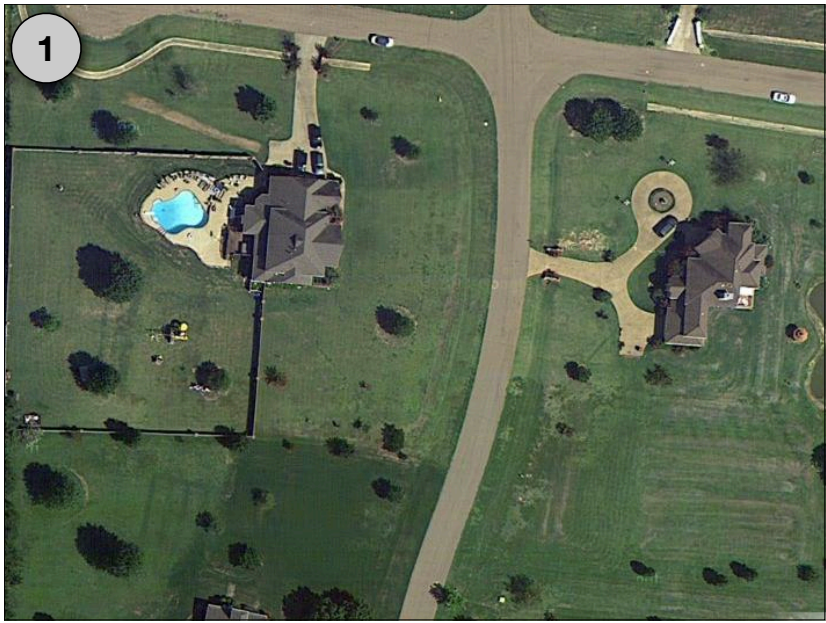
Example

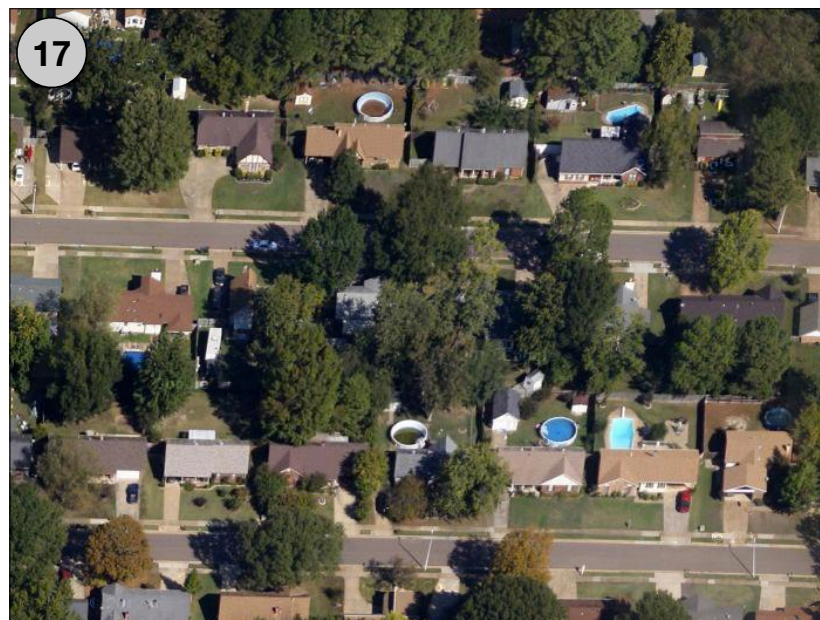
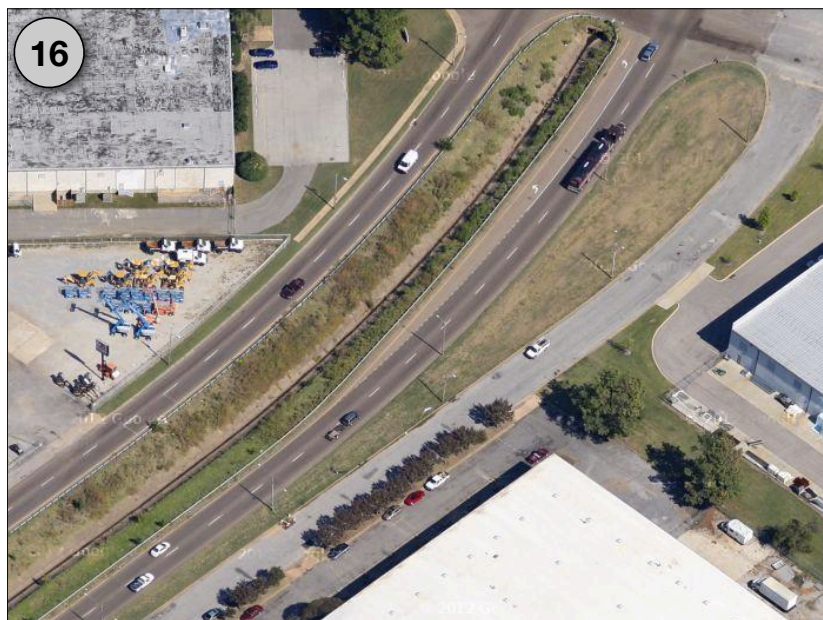
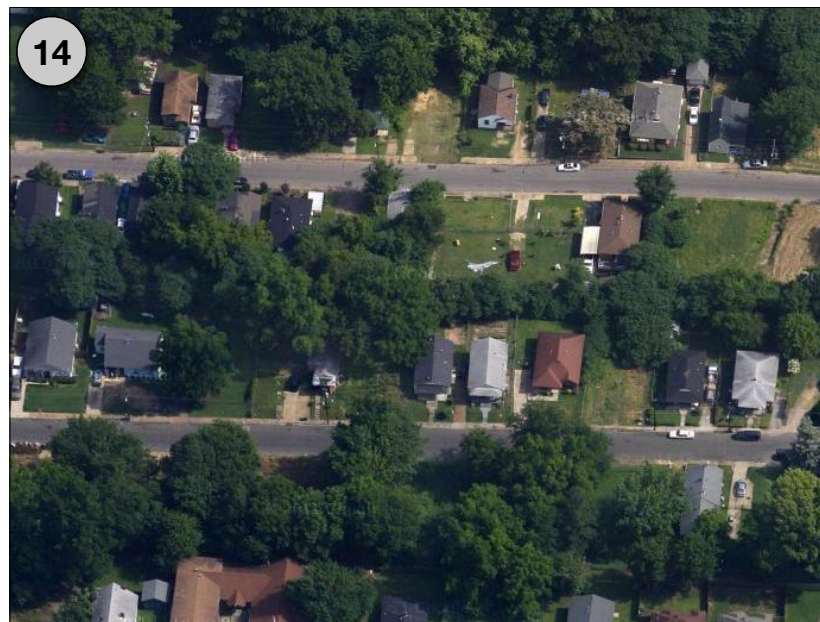
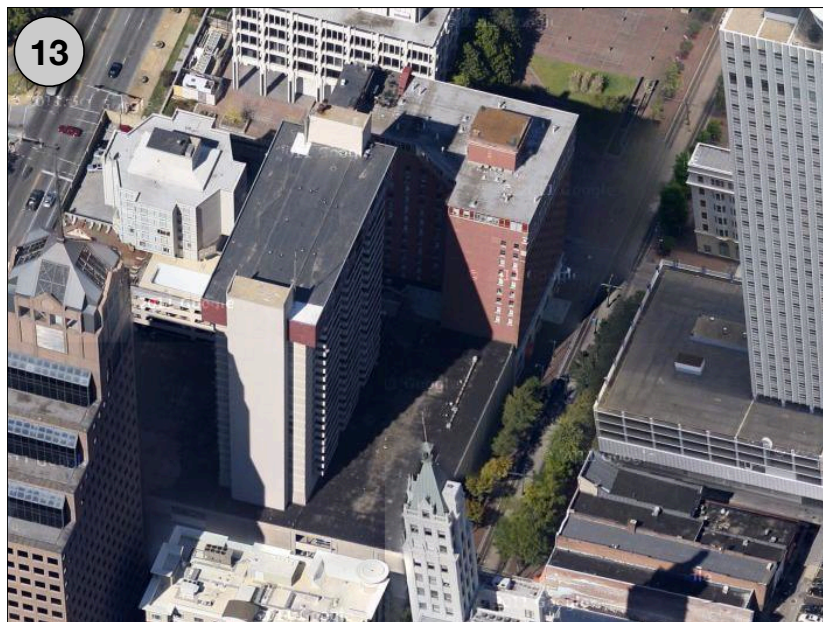
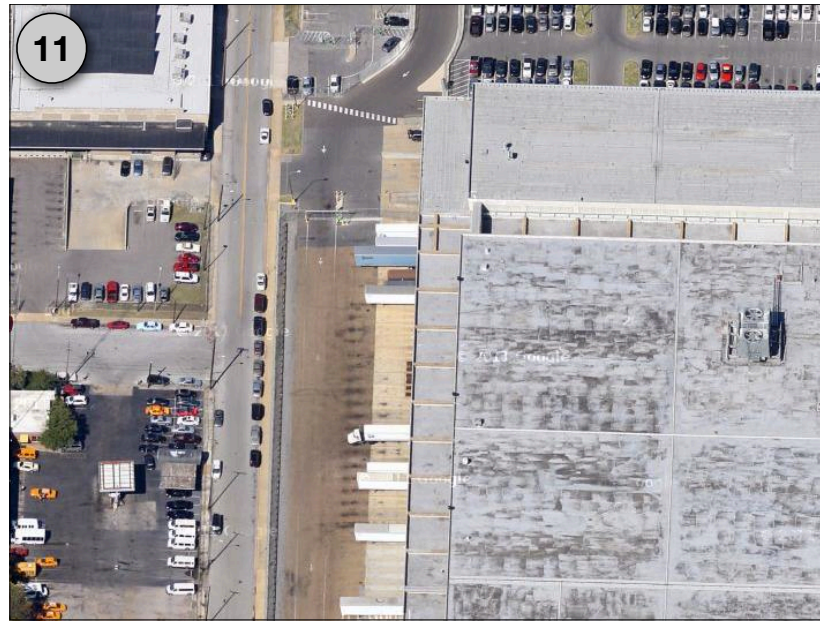
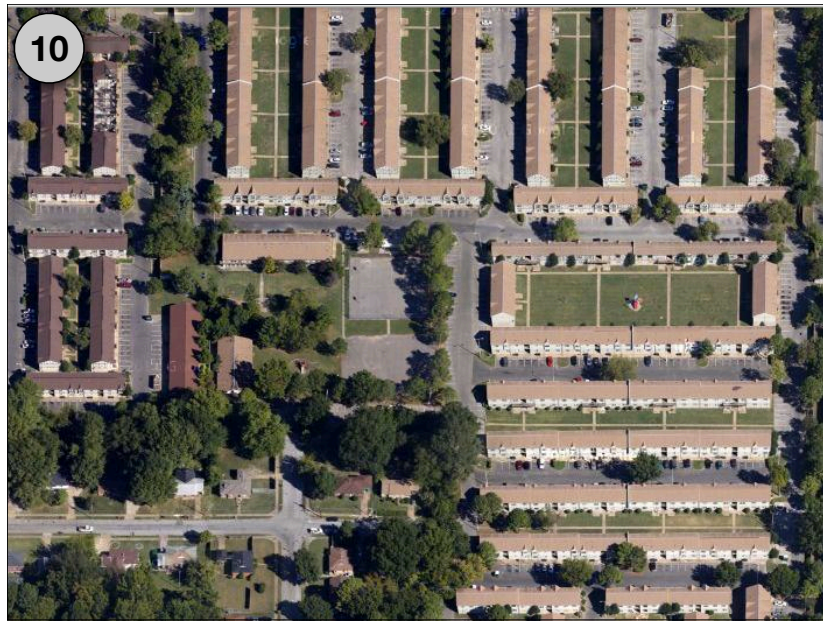
Map Location	Urban Model Applied	Description of Location	Explanation of how is applies to the model
1			
2			
3			
4			
5			
6			
7			
8			
9			
10			
11			
12			
13			
14			
15			
16			
17			
18			
19			
20			

Map Location	Urban Model Applied	Description of Location	Explanation of how is applies to the model
1		Large Wealthy Homes with Large Lots Far removed from the CBD.	
2			
3			
4			
5			
6			
7			
8			
9			
10			
11			
12			
13			
14			
15			
16			
17			
18			
19			
20			

Map Location	Urban Model Applied	Description of Location	Explanation of how is applies to the model
1	More than one answer?	Large Wealthy Homes with Large Lots Far removed from the CBD.	
2			
3			
4			
5			
6			
7			
8			
9			
10			
11			
12			
13			
14			
15			
16			
17			
18			
19			
20			

Map Location	Urban Model Applied	Description of Location	Explanation of how is applies to the model
1	More than one answer?	Large Wealthy Homes with Large Lots Far removed from the CBD.	Which model does the description fit?
2			
3			
4			
5			
6			
7			
8			
9			
10			
11			
12			
13			
14			
15			
16			
17			
18			
19			
20			





1



2



Monday, April 16, 2012

3



Monday, April 16, 2012

4



5



Monday, April 16, 2012

6



Monday, April 16, 2012

7



Monday, April 16, 2012

8



9



Monday, April 16, 2012

10



11



12



Monday, April 16, 2012

13



14



15



16



17





19



20

